

In the last few years, ceramics has suffered an increasing importance due to its high versatility and multiple possible scopes. Facades, both ventilated and directly installed, are now an effective alternative, economical and have an excellent performance.

By their nature, ceramic materials are suitable to their installation outdoors. Ceramic is a clean material, with insulation properties (thermal and acoustic) and high durability. All these features are reinforced with a wide range of finishes and sizes available in markets, that make the possibilities become endless.

The urban landscape is evolving into cleaner, more sustainable and aesthetic houses, qualities that ceramics perfectly fulfills. However, the way of installation and the complementary pieces for this kind of solution in façades, play an essential role to guarantee the long life of the installation.

Therefore, in Emac<sup>®</sup> we are adapted to the evolution of the construction world and we have a range of product specifically designed for façades. We offer a functional and aesthetic system, consisting of profiles which ensure and facilitate the correct installation of ceramics in façades and protect the installation against the thermal shock and the movements of the support.

## Why placing profiles in façades?

Profiles are the perfect complement for ceramic installations in façades. Either as a separator/ expansion joint, edge protector or system of drainage, all of them increase the durability of the installation along the time.

The placement of expansion joints between ceramic pieces, has an special importance. As all materials, ceramics has an expansion coefficient that makes its dimensions vary depending on the conditions under it is exposed. In the world of ceramic installations, façades are exposed to the most aggressive climate conditions due to its installation outdoors. This data has to be taken into account with other parameters such as the color of ceramics, the building orientation or the size of the tile, to choose the correct expansion joint. You should never install ceramics outdoors without taking into account the placement and distribution of expansion joints.

You can find out more information by consulting the Technical Document “Expansion Joints in Façades” developed by our Technical Department. In this document you can see the essential role that expansion joints play in façades. You can also consult a case study on the calculation of the distribution of expansion joints based on the parameters that have been commented before. You can download this document by clicking in:

- [Emac<sup>®</sup>'s Technical Documents](#)



### Novosepara Fix®



Novosepara Fix® is a profile intended to be placed in façades, made of high brightness AISI-304 Stainless Steel or silver matt anodized aluminum.

The geometry of this profile is designed to fit with the ceramic tiles. It makes installing and leveling easier. The wide face side of the profile, keep the joints of the installation hidden and adds a decorative value to the façade.

Novosepara Fix® has holes on its anchoring wing to install the fastening screws and increase the security of the installation. Installing the fastening screws do not exempt from the use of glue mortar or other specific mortars indicated in each case to the installation of the ceramic tiles on façades.

Novosepara Fix® is an added reinforcement for the installation. It allows the load of tiles of marble, granite or porcelain with high weight and size. This is an added advantage to install them in façades of high dimension buildings because they are usually installed in smaller buildings due to its weight.

The value of the supported load has been obtained through a test in AIMME (Metal-Processing Technology Institute belonging to the RediT of Valencia) getting up to 7000 N. In this Institute has also been tested its corrosion resistance, surpassing 500 hours of exposition to salt spray test without suffering surface variation.

This profile is also available in anodized aluminum, more resistant than natural one with better surface finish.

To find out more information, you can download the Technical Files by clicking here:

- [Technical File Novosepara Fix® Stainless Steel.](#)
- [Technical File Novosepara Fix® Aluminum.](#)



### Novofachada



Novofachada is a profile intended to be placed in façades, made of high brightness AISI-304 Stainless Steel or Silver matt anodized aluminum.

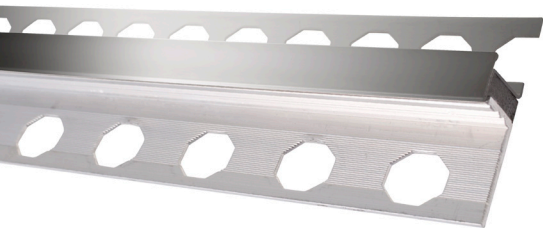
Novofachada is a functional profile whose central body is made of high quality EPDM rubber. This rubber absorbs the deformations and geometric variations that ceramic tiles suffer when are installed in façades. Once installed, Novofachada remains integrated into the ceramic installation, slightly overlapped with the edges of the ceramic tiles to keep the installation joints hidden.

The central body made of EPDM rubber remains hidden by a decorative small size plate made of high brightness stainless steel or silver matt anodized aluminum. Due to its size, Novofachada integrates in the ceramic installation giving a touch of elegance and distinction without losing its main function which is to absorb the deformations and variations of ceramic.

Both AISI 304 Stainless Steel as anodized aluminum, have resistance and durability features adequate to its installation outdoors.

To find out more information, you can download the Technical Files by clicking here:

- [Technical File Novofachada Stainless Steel](#)
- [Technical File Novofachada Aluminum.](#)



### Novojunta Decor<sup>®</sup> XL



Novojunta Decor<sup>®</sup> XL is a suitable profile for its installation in façades due to its technical properties and aesthetic finish. It is available in anodized aluminum silver matt.

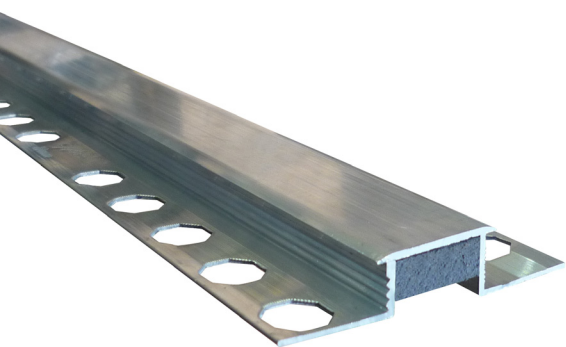
This profile, with a wide face side, is similar to Novofachada but with a higher size. Due to the body made of EPDM rubber inside, it has a great ability to move, up to 10 mm. in contraction movements and 6 mm. in expansion ones. The relation between size and movement, make this profile one of the best options to install due to its better performance against deformations and dimensional variations.

The face side is slightly overlapped in the edges of ceramic tiles, so is perfectly integrated in the whole installation. This profile keeps the joints hidden, avoiding them to be exposed to mechanical agressions.

The aluminum in which Novojunta Decor<sup>®</sup> XL is manufactured, has been anodized, which guarantees a good performance and a long life in outdoor installations.

To find out more information, you can download the Technical Files by clicking here:

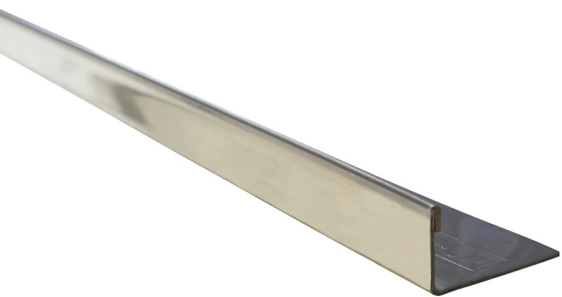
[- Technical File Novojunta Decor<sup>®</sup> XL](#)





Usually, the edges of the ceramic installations are cut at 45° angles or are overlapped in the encounters where they are installed. These areas are fragile and have high possibilities to suffer damage. This damage can be prevented by installing profiles such as Novopared or Novojunta<sup>®</sup> Pilastra, which keep the installation in optimal conditions.

### Novopared



Novopared is a profile “L” shaped intended to be placed in edges of ceramic installations. It is available in a wide range of colors but we strongly recommend using anodized aluminum or stainless steel in outdoor installations. These materials have a long durability which results in the long life of the installation.

Novopared is available in a wide range of heights and finishes.

To find out more information, you can download the Technical Files by clicking here:

- [Technical File Novopared Acero inoxidable](#)
- [Technical File Novopared Aluminio](#)

### Novojunta<sup>®</sup> Pilastra



Novojunta<sup>®</sup> Pilastra is a profile “X” shaped whose function is as an expansion joint. It has been designed to its placement in edges of ceramic installations to avoid damage caused by tensions and deformations of the own installation.

Its geometry allows it to absorb the movements of the two planes that converge in the edges, keeping them protected and giving an added decorative value. It is made of anodized aluminum, which guarantees an excellent performance and durability outdoors.

To find out more information, you can download the Technical Files by clicking here:

- [Technical File Novojunta<sup>®</sup> Pilastra](#)



These profiles help to evacuate water avoiding the drip of rainfall in the façade which could cause dampness. This range of products consists in slight profiles made of anodized or lacquered aluminum which adapt to ceramic windowsills remaining integrated. These profiles have been designed to evacuate correctly the rainfall. There are two types of Vierendeaguas in Emac<sup>®</sup>'s catalogue:

### Novovierendeaguas



Novovierendeaguas is a discreet profile made of aluminum which adapts to different ceramic heights. Its small face side and the range of colors available, make it suitable to be perfectly integrated with ceramics in shape and color. Therefore, you can install this profile in contrast with ceramics achieving colorful combinations.

Its geometry achieves the maximum functionality in a minimal space and weight. It is a more economical and slight than the common raw materials such as stone or concrete which are usually installed.

To find out more information, you can download the Technical Files by clicking here:

[- Technical File Novovierendeaguas](#)

### Novovierendeaguas 2



Novovierendeaguas 2 is an alternative option to Novovierendeaguas. It has an added decorative value due to its wide face in the front side. This achieves a contrast effect with ceramics.

Novovierendeaguas is available in anodized aluminum, a material suitable to installation outdoors due to its excellent performance and durability and an unsurpassable appearance.

To find out more information, you can download the Technical Files by clicking here:

[- Technical File Novovierendeaguas 2](#)

